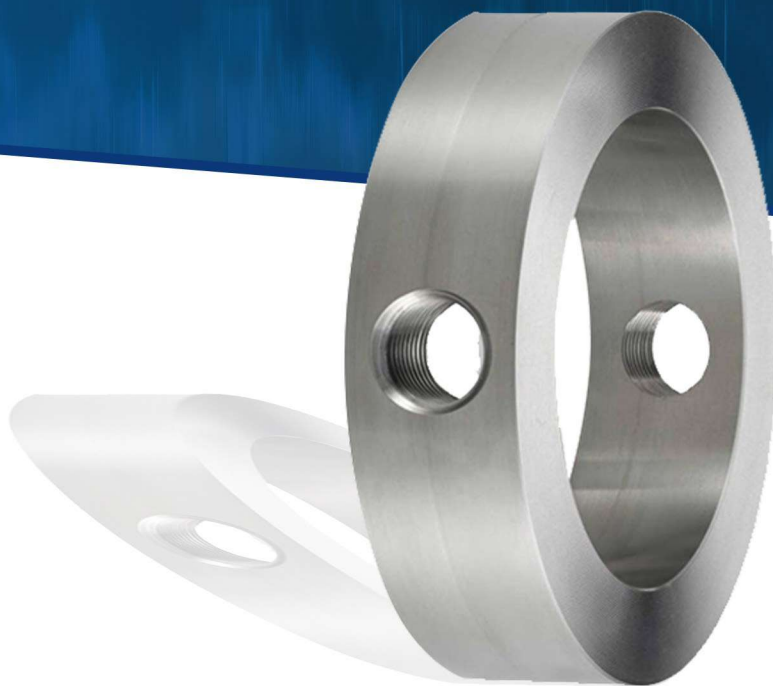




# Flushing Ring FLR Instruction Manual

---



## About the Company

---

Globe United FZE was established in 2010 in the Emirate of Sharjah within the United Arab Emirates. The company has three Business verticals: Manufacturing, Services and Distribution. Our quality and management practices are in compliance with ISO 9001:2015 and ISO 45001:2018 duly certified by TUV Nord

## Introduction

---

Flushing Rings are installed between diaphragm seals and process connections. Being a wetted and pressure exposed part, selection of the material of construction is extremely critical.

These rings are primarily used to give access to maintenance teams while they look to flush out debris or deposition, which may hinder correct pressure measurement.

Rings may have multiple flushing ports of 1/4", 1/2" or 1" sizes depending on the application. In other scenarios, flushing rings are used alongside DP type Level Transmitters. While commissioning the instruments, having vent on the flushing ring helps calibrate Level Transmitter, relieving the system of trapped air and creating a reference for zeroing the transmitter.

## Table of Contents

1. PRODUCT WARRANTY.....	04
2. RECEIVING INSPECTION AND PERFORMANCE CONFIRMATION.....	05
3. INSTALLATION .....	06
4. TECHNICAL ASSISTANCE .....	07

## 1. PRODUCT WARRANTY

---

Globe United FZE warrants its products as designed and manufactured by Globe United to be free of defects in the material and workmanship for a period of one year after the date of installation or eighteen months after the date of manufacture, whichever is earliest. Globe United FZE will, at its option, replace or repair any products which fail during the warranty period due to defective material or workmanship. Prior to submitting any claim for warranty service, the owner must submit proof of purchase to Globe United and obtain written authorization to return the product. Thereafter, the product shall be returned to Globe United. This warranty shall not apply if the product has been disassembled, tampered with, repaired or otherwise altered outside of Globe United factory, or if it has been subject to misuse, neglect or accident. The responsibility of Globe United hereunder is limited to repairing or replacing the product at its expense. Globe United shall not be liable for loss, damage or expenses related directly or indirectly to the installation or use of its products, or from any other cause or for consequential damages. It is expressly understood that Globe United is not responsible for damage or injury caused to other products, buildings, personnel or property, by reason of the installation or use of its products.

THIS IS GLOBE UNITED'S SOLE WARRANTY AND IN LIEU OF ALL OTHER WARRANTIES, EXPRESSED OR IMPLIED WHICH ARE HEREBY EXCLUDED, INCLUDING IN PARTICULAR ALL WARRANTIES OF MERCHANTABILITY OR FITNESS FOR A PARTICULAR PURPOSE.

This document and the warranty contained herein may not be modified and no other warranty, expressed or implied, shall be made by or on behalf of Globe United unless made in writing and signed by the General Manager.

### **Important**

Globe United does not have any control over the manner in which our Flushing Ring is handled, installed or used, and Globe United cannot and does not warrant or guarantee that the Flushing Ring is suitable or compatible with the user's specific application.

### **Warning**

Failure to follow any instruction could possibly result in a malfunction of the Flushing Ring with resulting sudden release of pressure causing serious personal injury or property damage.



## 2. RECEIVING INSPECTION AND PERFORMANCE CONFIRMATION

### 2.1 Receiving Inspection

Upon receipt of the Flushing Ring, check for damage incurred in transit. If damage is evident, do not attempt installation. Notify Globe United immediately for an inspection or for replacement.

### 2.2 User's Rating Inspection

The user shall confirm that the flushing Ring and pressure/temperature rating stamped on nameplate conforms to the description on your purchase order. The operating conditions described in the purchase order to be inline with the actual conditions at the installation site. The construction material of the flushing ring should be compatible with both the contained fluid and surrounding atmosphere in the specific application.

#### **Important**

If the size, model or performance data of the flushing ring as received does not conform to any of the criteria above, do not proceed with installation. Contact Globe United personnel for direction on what to do.

### 3. INSTALLATION

---

Use qualified experienced personnel who are familiar with this equipment and thoroughly understand all the instructions in this manual for the installation of this equipment.

- Make sure to remove any plastic covers on the flushing ring or diaphragm seal, which the flushing ring is being connected.
- Ensure that a gasket is placed between the instrument connection and flushing ring prior to bolting the components to the tank/pipe.
- If the flushing ring was ordered with flushing connections, ensure the flushing connections are either plugged or sealed before completing the installation.
- Place the washers onto the flange bolts.
- Insert two bolts in the bottom bolt holes of the flange on the instrument connection. Bolts are installed this way to avoid interference with the tank/pipe and to facilitate inspection of bolt material if required.
- Make sure the gasket does not overlap the inside of the instrument's diaphragm weld, as this will cause error in instrument readings.
- If the gasket is not properly installed, process leaks may occur.
- Attach previously installed bolts to process connection and loosely fasten washers and nuts onto the bolts.
- Insert remaining bolts into bolt holes from the instrument side and hand tighten washers and nuts.
- Make sure to tighten each bolt using a cross pattern to guarantee the bolts are evenly tightened during installation. The applicable torque values should be applied with a torque wrench.

#### **Important**

Do not re-use spiral wound gaskets after installation. New length studs may be required for install. Be sure to follow all applicable standards when choosing studs/nuts.



## 4. TECHNICAL ASSISTANCE

---

If you are having difficulty with your Flushing Ring, contact Globe United FZE. To assist you more effectively on call, please have following details with you ready

- a) Process Condition (Pressure, Flow rates etc)
- b) Your purchase order number, our sales order number and invoice copy.
- c) Trouble shooting procedures attempted by you but failed.

**Note:**

There will be nominal charges applicable for evaluation at the site for non-warranty products and if under warranty but not physically damaged there will nominal charges applicable.



ECR.V0.04.0422

©2021 Globe United FZE, All rights reserved.

 T5-41, Sharjah Airport International Free Zone, Sharjah, U.A.E.

 [info@globeunitedae.com](mailto:info@globeunitedae.com)

 T: +971 65585309 | M: +971 55 9998947

